



3M™ Glass Decorative Films

Elegance and versatility,  
to manage space with style





Glass means transparency, brightness, lightness, freshness and elegance. It is an essential element in building design such as offices, showrooms and shopping malls. It can be used as communication media, it can be decorated, it can be used to separate public and private spaces, it can be processed to ensure a more comfortable space.

3M Glass Decorative films are perfect for privacy and decorative applications on glass and windows. The ideal solution to give a touch of elegance and originality to the glass surfaces of malls, shops, restaurants, offices, hotels, wellness and spas.

## Content

Our Solutions	04
3M™ Fasara™ Glass Decorative Films	06
Gradation Patterns	08
Stripe Patterns	10
Border - Horizontal Patterns	12
Prism - Dot Patterns	14
Fabric - Rice Paper Patterns	16
Frost - Mat Patterns	18
3M™ Scotchcal™ Dusted/Frosted Crystal Film Series 7725SE	20

*While every effort has been made to give an accurate representation for each product, due to some limitations of the photographic process, we recommend you to request a sample to support selection.*





3M offers a wide range of creative options for decorating glass with surprising effects that can be customized as required, to suit the tastes of each customer. In addition to providing a high-quality end result, these films are easy to adapt, apply and maintain.

## Durability

3M expertise in adhesives ensures fast, accurate, beautiful and durable application to a variety of glass substrates.

## Flexibility

Perfect for indoor or outdoor application. Works on flat or curved surfaces.  
The material itself is amazingly flexible and easy to apply.  
Product can be removed and reapplied if brands or design changes.

## Budget-friendly

You get the beauty, translucency and privacy of etched, cut, sandblasted or texturized decorative glass at a fraction of the price.  
Applying Fasara and Crystal glass finishes directly to glass saves time and money, and makes the project go fast and easy. It can be applied on-site with little or no business downtime.

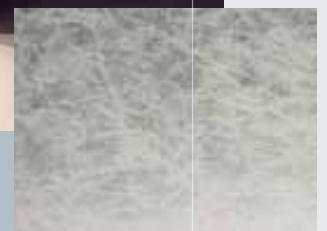
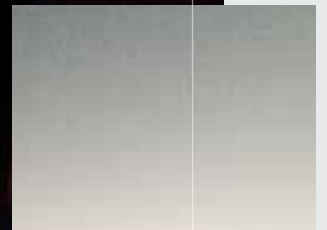
## Application areas

The areas of use for 3M Glass Decorative Films are unlimited:

- Offices, banks and agencies
- Shopping malls, shop windows and showrooms
- Hotels, restaurants, bars and other public places
- Wellness, spa centres and verandas

The films can be applied on glass doors, glass wardrobes, mirrors, lobbies, staircases, windows and partitions.

# Our Solutions





# More than 50 patterns, Unlimited Creativity



Visit our website  
[www.3Marchitecturalmarkets.ca](http://www.3Marchitecturalmarkets.ca)  
for additional information or a complete  
overview about 3M AMD offerings





Fasara™ Linen

## 3M™ Fasara™ Glass Decorative Films

3M Fasara Glass Decorative Films is a range of high quality films made of durable polyester with a decorative matte surface, perfect for privacy and decorative applications on glass and windows. Its application is quick, simple and direct, and does not require removal or transfer of the existing glass for pre-fitting preparation. Ideal for elegant screening of conference rooms, waiting rooms and glass partitions. In addition to a striking visual effect, 3M Fasara ensure the safety of glass, holding the fragments in case of accidental breakage and reduces up to 99% UV radiation. They are available in more than 50 different designs, with different light transmission and reflection.

### Product Information

- High quality polyester film
- Dress all the glazings
- Removable, pressure sensitive acrylic adhesive
- Film thickness varies from 70 to 140 microns
- Low gloss surface
- Shatter resistance
- Flammability standards
- Durability up to 5 years
- Roll sizes: 1.27 x 30 m / 1.27 x 9 m

### Maintenance and Cleaning

- Film can be removed when required
- No specific maintenance is needed
- If the surface of the film becomes dirty, wash carefully with water
- Abrasive type cleaning agents and brushes must not be used

### Pattern Combination

Some patterns may be combined together, increasing even more the creative possibilities. Contact us for additional information.

Family	Number of patterns	3M Warranty (Years-Interior Application)	3M Warranty (Years-Interior Application To Exterior Facing Wall)
Gradation	7	5	3
Stripe	9	5	3
Border - Horizontal	7	5	3
Prism - Dot	10	5	3
Fabric - Rice Paper	6	5	3
Frost - Mat	13	5	3

Visit [www.3Marchitecturalmarkets.ca](http://www.3Marchitecturalmarkets.ca) for additional information.



# The Subtlety of Gradations



# 3M™ Fasara™ Gradation Patterns

These 3M Fasara films transition from fully opaque white to clear over the full roll width, thanks to a varying density of pixels.

Perfect for areas where you need high level light but total privacy.

Some of them can be combined together to create unique visual effects.



Illumina \*



Illumina g \*\*



Aerina \*\*\*



Lontano



Tsurugi



Venetian \*\*\*\*



Robe \*\*\*\*

## COLOUR MATCHING

\* Illumina: Same colour as Luce

\*\* Illumina g: Same colour as Glace

\*\*\* Aerina: Same colour as Cielo

\*\*\*\* Venetian & Robe: Same colour as Luce



A photograph of a modern office interior. The space is filled with glass partitions and horizontal blinds, creating a pattern of light and shadow. The ceiling features a grid of recessed fluorescent lights. The overall aesthetic is clean, professional, and contemporary.

# The Elegance of Stripes

# 3M™ Fasara™ Stripe Patterns

Give a high tech appearance to your glass surfaces, with different patterns offering vertical or horizontal stripes of various thickness and colour density.



Nokto



Radius



Shutie



Shutie Black



Arpa



Arpa Black



Seattle



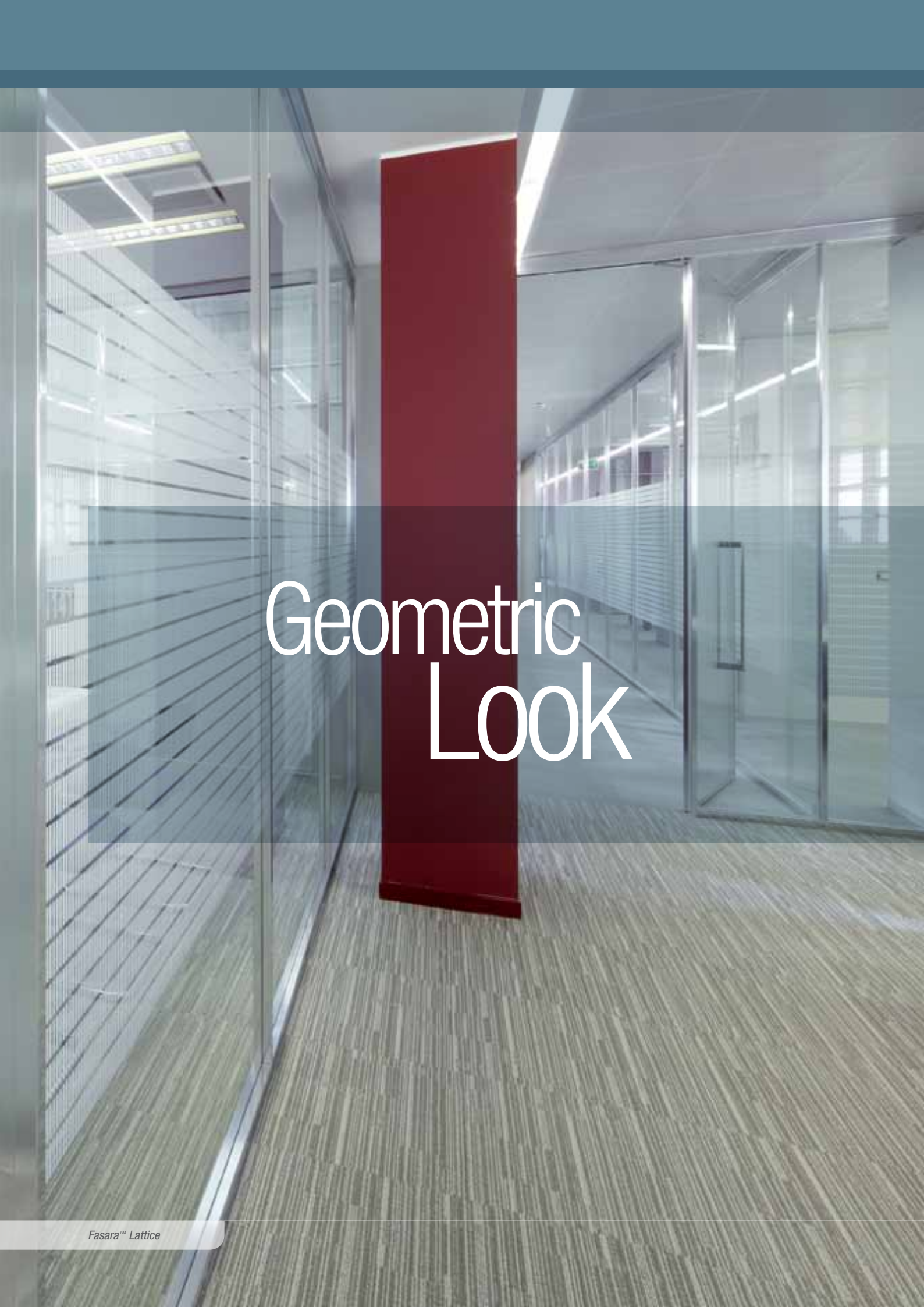
Seattle Fine



Fine





A photograph of a modern office hallway. The walls are made of glass with horizontal blinds. A prominent red pillar stands in the center. The floor is covered with a patterned carpet. The text "Geometric Look" is overlaid in white.

# Geometric Look

# 3M™ Fasara™ Border & Horizontal Patterns

Horizontal bands of various sizes displayed in an elegant way to screen out the passage of light.

The Leise pattern, in particular, offers a nice, subtle haze effect.



Lattice \*



Lattice g \*\*



Slat \*



Slat g \*\*



Pixela



Paracell



Leise



## COLOUR MATCHING

\* Lattice and Slat: Same colour as Luce

\*\* Lattice g and Slat g: Same colour as Glace



# Vintage Atmosphäre



# 3M™ Fasara™ Prism & Dot Patterns

Use prisms and dots to reflect and transmit light and generate charming silver glazing. A design tradition to reproduce the atmosphere of the '50s.



Prism Noir



Prism Silver



Astral Silver



Cielo



Luna 6



Vista



Luna 9



Aura 9



Shizuku



Kanon





# A taste of Orient

# 3M™ Fasara™ Fabric & Rice Paper Patterns

Linen fabric, rice paper, the tradition of oriental design meets the most advanced 3M adhesive technology to offer new and original life to glazing.



Linen



Altair



Vega



Sagano 2



Yamato



Rikyu







# A touch of Satin

# 3M™ Fasara™ Frost & Mat Patterns

These patterns are designed to break up the light and give a very soft warm feel to interiors and exteriors. The frosted patterns recreate with efficiency the aspect of a frosted glass. They partially or totally obscure the view but allow light transmission. The Mat Crystal 2 and Milky Crystal patterns have been developed for exterior applications.



Essen



Lausanne



Oslo



Chamonix



Opaque White



Glace



Fine Crystal



Mat Crystal i



Mat Crystal 2  Applicable for outside



Milky White



Milky Milky



Milky Crystal  Applicable for outside



Luce





# Crystallize your Environment



# 3M™ Scotchcal™ Dusted/Frosted Crystal Film

## Series 7725SE

Long-lasting translucent films, to create the effect of traditional dusted (acid-etched look) or frosted (sandblasted look) glass, neutral or coloured. These films provide excellent uniformity of colour under transmitted or reflected light. They can be used indoor and outdoor. They provide the ability to create complex designs or lettering using the electronic cutting technology. Ideal for corporate identity needs and long term applications.



Dusted Clear



Frosted Clear



Frosted Green



Frosted Blue



Frosted Pink



Frosted Gold

### Product Information

- High quality pressure-sensitive films
- Electronic/computer plot
- Film thickness: dusted films 0.05 mm / frosted films 0.09 mm
- Piezo inkjet printable
- Flammability standards
- Roll sizes: 1.22 x 45.7 m / 1.52 x 45.7 m
- Available in 6 finishes

### Maintenance and Cleaning

- No specific maintenance is needed
- If the surface of the film becomes dirty, wash with water or with a mild detergent
- Abrasive type cleaning agents and brushes must not be used

Product	Finish	Maximum 3M Warranty (Years - Interior)	Maximum 3M Warranty (Years - Exterior)
7725-314	Dusted Clear	15	3
7725-324	Frosted Clear	15	3
7725-323	Frosted Pink	15	3
7725-326	Frosted Green	15	3
7725-327	Frosted Blue	15	3
7725-331	Frosted Gold	15	3

\* For complete and up to date warranty information please refer to product bulletin 7725SE.

Visit [www.3Marchitecturalmarkets.ca](http://www.3Marchitecturalmarkets.ca) for additional information.





Materials that meet your  
**aesthetic aspirations,**  
performance demands & budget realities.



Innovating beautiful yet practical  
products that meet the diverse needs  
of designers, architects, building owners  
and operators, contractors  
and other professionals.





Visit [www.3Marchitecturalmarkets.ca](http://www.3Marchitecturalmarkets.ca) for the most current, up-to-date information.



**Architectural Markets**

3M Canada  
P.O. Box 5757  
London, ON N6A 4T1  
1-800-364-3577  
[www.3Marchitecturalmarkets.ca](http://www.3Marchitecturalmarkets.ca)

3M, Fasara and Scotchcal are trademarks of 3M.  
Used under license in Canada. © 2012, 3M. All Rights Reserved.  
BA-12-16935 1204-00972 E